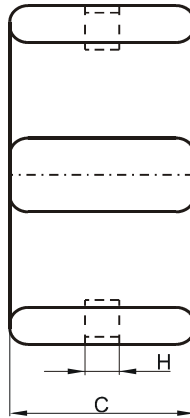
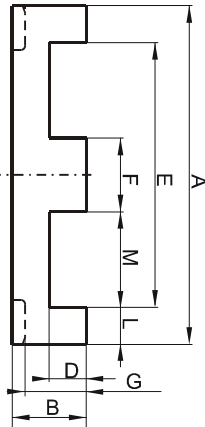


Specification for:

**CP41434EC**

110 Delta Drive  
Pittsburgh, PA 15238  
Phone: 412/696-1333  
Fax: 412/696-0333  
Email: magnetics@spang.com

**DIMENSIONS**



(mm)	Nominal:	Tol. min.:	Tol. max.:
<b>A</b>	14.0	-0.3	+ 0.3
<b>B</b>	3.5	-0.1	+ 0.1
<b>C</b>	5.0	-0.15	+ 0.15
<b>D</b>	1.91 Min.		
<b>E</b>	10.5 Min.		
<b>F</b>	3.0	-0.1	+ 0.1
<b>G</b>	2.8	-0.15	+ 0.15
<b>H</b>	2.5	0.0	+ 0.2
<b>L</b>	1.5 Ref.		
<b>M</b>	4.0 Ref.		
Eff. Parameters			
<b>Ae mm<sup>2</sup></b>	<b>Amin mm<sup>2</sup></b>	<b>le mm</b>	<b>Ve mm<sup>3</sup></b>
14.66	14.66	20.7	303.9

**INDUCTANCE**

AL value (nH)	Test conditions
Nom: 1399 Min.: 1049	10 kHz, < 0.5 mT, 25 °C

**MARKING**

No marking

**CORE LOSSES**

P <sub>i</sub> max	Test conditions
105 mW/cm <sup>3</sup> (0.032 W/set)	100 kHz, 100 mT, 100 °C

**NOTE**

Spec. modifications	Previous	Revised
2005-06-22	Al=1350 Min. A=13.8 Min. Losses: General P material	Al=1049 Min. A=13.7 Min. Losses: Detail as indicated