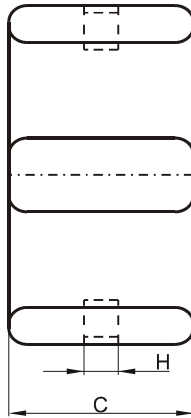
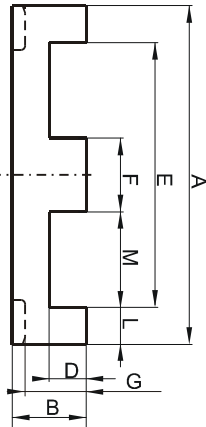


Specification for:

CR41434EC

110 Delta Drive
Pittsburgh, PA 15238
Phone: 412/696-1333
Fax: 412/696-0333
Email: magnetics@spang.com

DIMENSIONS



(mm)	Nominal:	Tol. min.:	Tol. max.:
A	14.0	-0.3	+ 0.3
B	3.5	-0.1	+ 0.1
C	5.0	-0.15	+ 0.15
D	1.91 Min.		
E	10.5 Min.		
F	3.0	-0.1	+ 0.1
G	2.8	-0.15	+ 0.15
H	2.5	0.0	+ 0.2
L	1.5 Ref.		
M	4.0 Ref.		
Eff. Parameters			
Ae mm²	Amin mm²	le mm	Ve mm³
14.66	14.66	20.7	303.9

INDUCTANCE

AL value (nH)	Test conditions
Nom: 1327 Min.: 995	10 kHz, < 0.5 mT, 25 °C

MARKING

R EC

CORE LOSSES

P _i max	Test conditions
86 mW/cm ³ (0.026 W/set)	100 kHz, 100 mT, 100 °C
526 mW/cm ³ (0.16 W/set)	100 kHz, 200 mT, 100 °C

NOTE

Spec. modifications	Previous	Revised
2005-06-22	Al= 1000 Min. A=13.8 Min. Losses: General R material	Al= 995 Min. A=13.7 Min. Losses: Detail as indicated