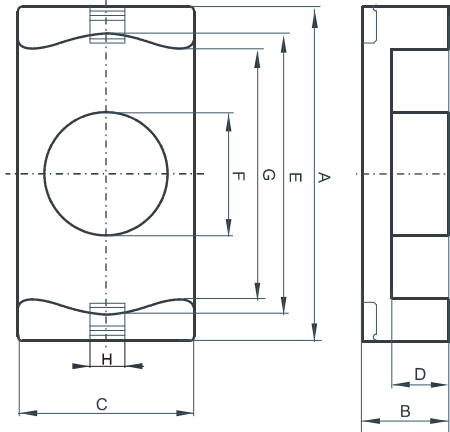


DIMENSIONS



(mm)	Nominal:	Tol. min.:	Tol. max.:
A	20.0	-0.35	+ 0.35
B	6.3	-0.1	+ 0.1
C	14.0	-0.3	+ 0.3
D	4.1	-0.15	+ 0.15
E	18.0	-0.35	+ 0.35
F	8.8	-0.15	+ 0.15
G	12.86	-0.35	+ 0.35
H	2.9	-0.1	+ 0.1
Eff. Parameters			
Ae mm²	Amin mm²	le mm	Ve mm³
59.0	55.0	33.2	1960

INDUCTANCE

MARKING

AL value (nH/T²)	Test conditions
Nom: 3788 Min.: 2841	10 kHz, < 0.5 mT, 25°C

R EC

CORE LOSSES

P_i max	Test conditions
87 mW/cm ³ (0.17 W/set)	100 kHz, 100 mT, 100°C
612 mW/cm ³ (1.2 W/set)	100 kHz, 200 mT, 100°C