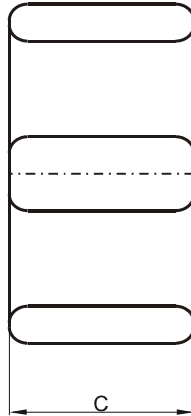
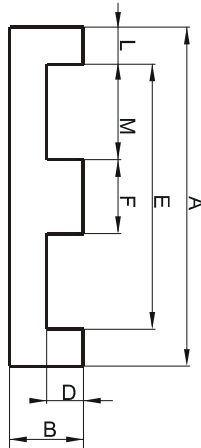


DIMENSIONS



(mm)	Nominal:	Tol. min.:	Tol. max.:
A	31.75	-0.64	+ 0.64
B	6.35	-0.13	+ 0.13
C	20.32	-0.41	+ 0.41
D	3.18	-0.2	+ 0.2
E	24.9 Min.		
F	6.35	-0.13	+ 0.13
L	3.18		
M	9.27		
Eff. Parameters			
Ae mm²	Amin mm²	le mm	Ve mm³
130.0	130.0	41.4	5380

INDUCTANCE

MARKING

AL value (nH/T ²)	Test conditions	FF43208EC PXXXXX
7834 ± 25%	10 kHz, < 0.5 mT, 25 °C	

CORE LOSSES

P _i max	Test conditions
204 mW/cm ³ (1.1 W/set)	25 kHz, 200 mT, 100 °C

NOTE

Spec. modifications	Previous	Revised
2005-06-22	A=32.26 Max. A=31.24 Min. D=3.05 Min. L=3.18 Nom. M=9.27 Min. Losses: General F material	A=32.39 Max. A=31.11 Min. D=2.98 Min. L=3.18 Ref. M=9.27 Ref. Losses: Detail as indicated