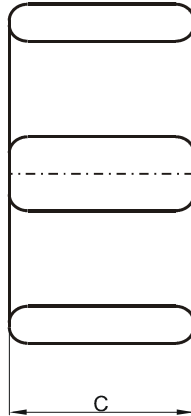
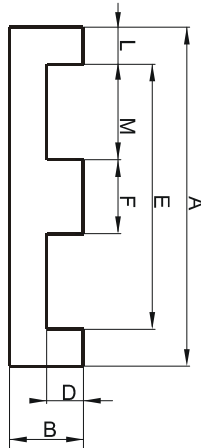


DIMENSIONS



(mm)	Nominal:	Tol. min.:	Tol. max.:
A	43.2	-0.9	+ 0.9
B	9.5	-0.13	+ 0.13
C	27.9	-0.6	+ 0.6
D	5.4	-0.13	+ 0.13
E	34.7 Min.		
F	8.1	-0.2	+ 0.2
L	4.7 Max.		
M	13.2 Min.		
Eff. Parameters			
Ae mm ²	Amin mm ²	le mm	Ve mm ³
229.0	229.0	61.1	13900

INDUCTANCE

MARKING

AL value (nH/T ²)	Test conditions	FP44310EC PXXXXX
Nom: 8803 Min.: 6602	10 kHz, < 0.5 mT, 25 °C	

CORE LOSSES

P _i max	Test conditions
129 mW/cm ³ (1.8 W/set)	100 kHz, 100 mT, 100 °C

NOTE

Spec. modifications	Previous	Revised
2005-06-22	AL=6530 Min. AL=8707 Nom. A=43.69 Max. A=42.67 Min. B=9.40 Min. C=28.32 Max. C=27.56 Min. D=5.33 Min. L=4.064±0.13 M=13.46±0.15 Losses: General P material	AL=6602 Min. AL=8803 Nom. A=44.1 Max. A=42.3 Min. B=9.37 Min. C=28.5 Max. C=27.3 Min. D=5.27 Min. L=4.7 Max. M=13.2 Min. Losses: Detail as indicated