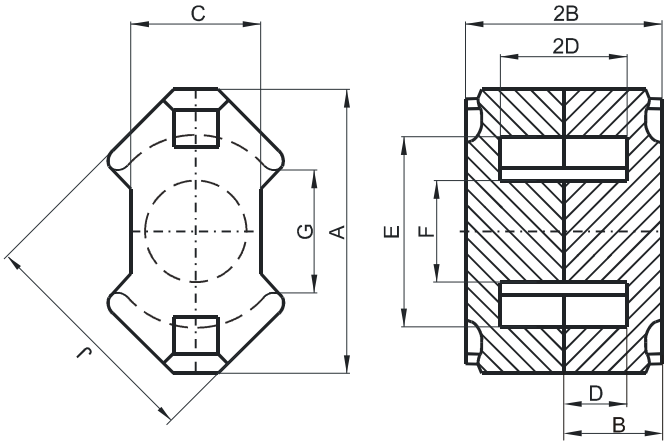


Specification for:

NF43723UG

110 Delta Drive
Pittsburgh, PA 15238
Phone: 412/696-1333
Fax: 412/696-0333
Email: magnetics@spang.com

DIMENSIONS



(mm)	Nominal:	Tol. min.:	Tol. max.:
A	37.4	-1.3	0.0
B	12.25	-0.05	+ 0.05
2B	24.5	-0.1	+ 0.1
C	16.1	-0.5	0.0
D	8.4	0.0	+ 0.3
2D	16.8	0.0	+ 0.6
E	24.9	0.0	+ 1.1
F	12.8	-0.4	0.0
G	12.9 Min.		
J	29.8	-1.1	0.0
Eff. Parameters			
Ae mm ²	Amin mm ²	le mm	Ve mm ³
146	125	56.6	8340

INDUCTANCE

AL value (nH)	Test conditions
6000 ± 25%	10 kHz, < 0.5 mT, 25 °C

MARKING

F UG

CORE LOSSES

P _i max	Test conditions
216 mW/cm ³ (1.8 W/set)	25 kHz, 200 mT, 100 °C

NOTE

Spec. modifications	Previous	Revised
2005-06-22	B=11.73±0.05 2B=23.46±0.1 C=15.9 Nom. E=24.99 Min. G=15.2 Nom. Losses: General F material	B=12.25±0.05 2B=24.5±0.1 C=16.1 Max. C=15.6 Min. E=24.9 Min. G=12.9 Min. Losses: Detail as indicated