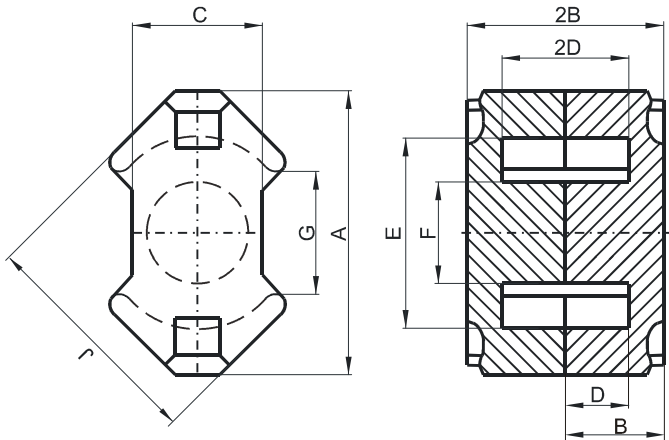


**DIMENSIONS**



(mm)	Nominal:	Tol. min.:	Tol. max.:
<b>A</b>	14.6	-0.6	0.0
<b>B</b>	5.2	-0.05	+ 0.05
<b>2B</b>	10.4	-0.1	+ 0.1
<b>C</b>	6.8	-0.4	0.0
<b>D</b>	3.25	-0.1	+ 0.1
<b>2D</b>	6.5	-0.2	+ 0.2
<b>E</b>	10.2	0.0	+ 0.4
<b>F</b>	4.9	-0.2	0.0
<b>G</b>	6.0 Nom.		
<b>J</b>	12.3	-0.5	0.0
<b>Eff. Parameters</b>			
<b>Ae mm<sup>2</sup></b>	<b>Amin mm<sup>2</sup></b>	<b>le mm</b>	<b>Ve mm<sup>3</sup></b>
24.8	18.1	23.2	574

**INDUCTANCE**

**MARKING**

<b>AL value (nH/T<sup>2</sup>)</b>	<b>Test conditions</b>	<b>No marking</b>
770 ± 25%	10 kHz, < 0.5 mT, 25 °C	

**CORE LOSSES**

<b>P<sub>i</sub> max</b>	<b>Test conditions</b>
400 mW/cm <sup>3</sup> (0.23 W/set)	1000 kHz, 50 mT, 100 °C
134 mW/cm <sup>3</sup> (0.0769 W/set)	3000 kHz, 10 mT, 100 °C