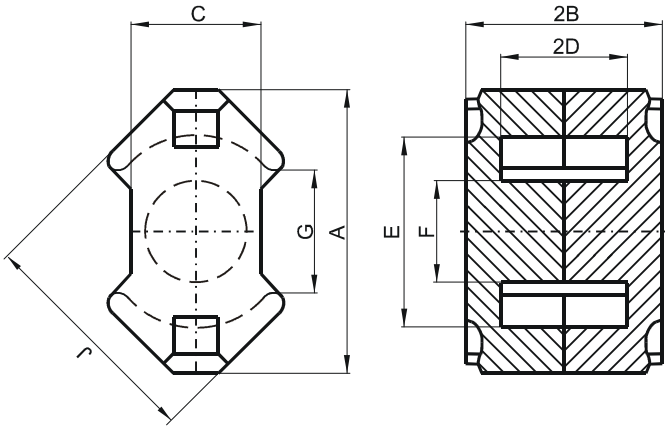


Specification for:

## NP41510UG

110 Delta Drive  
Pittsburgh, PA 15238  
Phone: 412/696-1333  
Fax: 412/696-0333  
Email: magnetics@spang.com

### DIMENSIONS



(mm)	Nominal:	Tol. min.:	Tol. max.:
<b>A</b>	14.6	-0.6	0.0
<b>B</b>	5.2	-0.05	+ 0.05
<b>2B</b>	10.4	-0.1	+ 0.1
<b>C</b>	6.8	-0.4	0.0
<b>D</b>	3.25	-0.1	+ 0.1
<b>2D</b>	6.5	-0.2	+ 0.2
<b>E</b>	10.2	0.0	+ 0.4
<b>F</b>	4.9	-0.2	0.0
<b>G</b>	6.0 Min.		
<b>J</b>	12.3	-0.5	0.0
Eff. Parameters			
<b>Ae mm<sup>2</sup></b>	<b>Amin mm<sup>2</sup></b>	<b>le mm</b>	<b>Ve mm<sup>3</sup></b>
24.8	18.1	23.2	574

### INDUCTANCE

AL value (nH)	Test conditions
Nom: 1867 Min.: 1400	10 kHz, < 0.5 mT, 25 °C

### MARKING

P UG
---------

### CORE LOSSES

P <sub>i</sub> max	Test conditions
139 mW/cm <sup>3</sup> (0.08 W/set)	100 kHz, 100 mT, 100 °C

### NOTE

Spec. modifications	Previous	Revised
2005-06-16	Losses: General P material	Losses: Detail as indicated