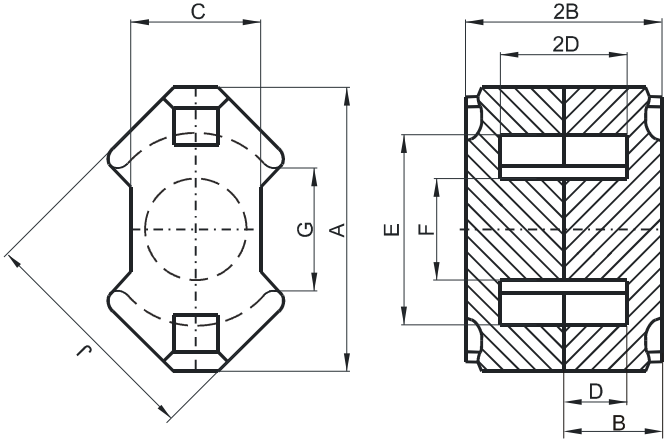


Specification for:

NR4110UG

110 Delta Drive
Pittsburgh, PA 15238
Phone: 412/696-1333
Fax: 412/696-0333
Email: magnetics@spang.com

DIMENSIONS



(mm)	Nominal:	Tol. min.:	Tol. max.:
A	11.0	-0.5	0.0
B	5.2	-0.05	+ 0.05
2B	10.4	-0.1	+ 0.1
C	4.6	-0.2	0.0
D	3.5	0.0	+ 0.2
2D	7.0	0.0	+ 0.4
E	7.95	0.0	+ 0.4
F	3.9	-0.2	0.0
G	5.8 Min.		
J	9.8	-0.4	0.0
Eff. Parameters			
Ae mm²	Amin mm²	le mm	Ve mm³
13.8	11.5	23.3	322

INDUCTANCE

AL value (nH)	Test conditions
Nom: 1125 Min.: 844	10 kHz, < 0.5 mT, 25 °C

MARKING

No marking

CORE LOSSES

P _i max	Test conditions
93 mW/cm ³ (0.03 W/set)	100 kHz, 100 mT, 100 °C
621 mW/cm ³ (0.2 W/set)	100 kHz, 200 mT, 100 °C

NOTE

Spec. modifications	Previous	Revised
2005-06-22	Losses: General R material Marking	Losses: Detail as indicated No marking