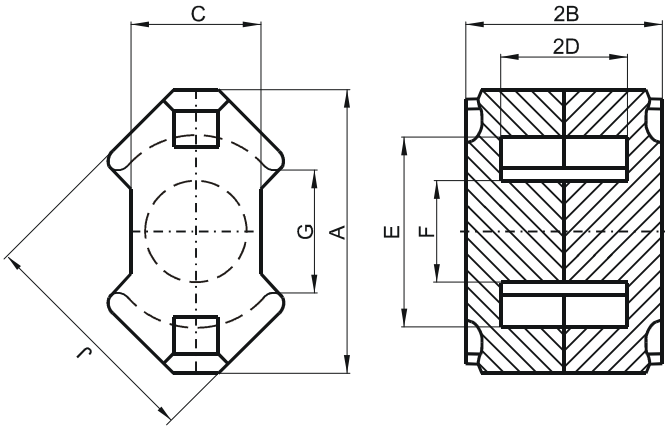


Specification for:

NR41510UG

110 Delta Drive
Pittsburgh, PA 15238
Phone: 412/696-1333
Fax: 412/696-0333
Email: magnetics@spang.com

DIMENSIONS



(mm)	Nominal:	Tol. min.:	Tol. max.:
A	14.6	-0.6	0.0
B	5.2	-0.05	+ 0.05
2B	10.4	-0.1	+ 0.1
C	6.8	-0.4	0.0
D	3.25	-0.1	+ 0.1
2D	6.5	-0.2	+ 0.2
E	10.2	0.0	+ 0.4
F	4.9	-0.2	0.0
G	6.0 min.		
J	12.3	-0.5	0.0
Eff. Parameters			
Ae mm²	Amin mm²	le mm	Ve mm³
24.8	18.1	23.2	574

INDUCTANCE

AL value (nH)	Test conditions
Nom: 1720 Min.: 1290	10 kHz, < 0.5 mT, 25 °C

MARKING

No marking

CORE LOSSES

P _i max	Test conditions
98 mW/cm ³ (0.056252 W/set)	100 kHz, 100 mT, 100 °C
580 mW/cm ³ (0.33292 W/set)	100 kHz, 200 mT, 100 °C

NOTE

Spec. modifications	Previous	Revised
2005-06-16	LOSSES: GENERAL R MATERIAL MARKING	LOSSES: DETAIL AS INDICATE NO MARKING