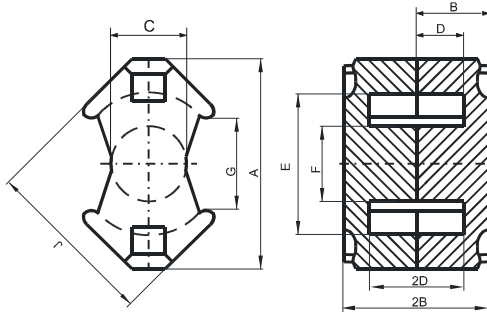


DIMENSIONS



(mm)	Nominal:	Tol. min.:	Tol. max.:
A	20.3	-0.8	0.0
B	6.7	-0.05	+ 0.05
2B	13.4	-0.1	+ 0.1
C	7.25	-0.3	0.0
D	4.2	0.0	+ 0.25
2D	8.4	0.0	+ 0.5
E	14.75	0.0	+ 0.6
F	7.25	-0.3	0.0
G	9.3 Min.		
J	17.2	-0.7	0.0
Eff. Parameters			
Ae mm²	Amin mm²	le mm	Ve mm³
44.1	39.6	30.0	1325

INDUCTANCE

MARKING

AL value (nH/T²)	Test conditions	No marking
Nom: 3058 Min.: 2294	10 kHz, < 0.5 mT, 25 °C	

CORE LOSSES

P_i max	Test conditions
< 0.13 W/set (< 98 mW/cm ³)	100 kHz, 100 mT, 100 °C
< 0.7 W/set (< 528 mW/cm ³)	100 kHz, 200 mT, 100 °C