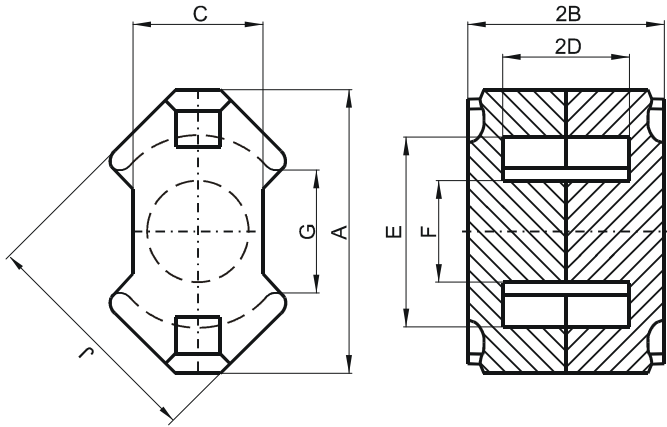


Specification for:

NR42316UG

110 Delta Drive
Pittsburgh, PA 15238
Phone: 412/696-1333
Fax: 412/696-0333
Email: magnetics@spang.com

DIMENSIONS



(mm)	Nominal:	Tol. min.:	Tol. max.:
A	23.2	-0.9	0.0
B	8.2	-0.05	+ 0.05
2B	16.4	-0.1	+ 0.1
C	11.0	-0.5	0.0
D	5.5	-0.1	+ 0.1
2D	11.0	-0.2	+ 0.2
E	17.0	0.0	+ 0.6
F	8.55	-0.3	0.0
G	9.5 min.		
J	19.7	-0.8	0.0
Eff. Parameters			
Ae mm²	Amin mm²	le mm	Ve mm³
63.0	55.4	38.4	2440

INDUCTANCE

AL value (nH)	Test conditions
Nom: 2700 Min.: 2025	10 kHz, < 0.5 mT, 25 °C

MARKING

R UG

CORE LOSSES

P _i max	Test conditions
98 mW/cm ³ (0.23912 W/set)	100 kHz, 100 mT, 100 °C
580 mW/cm ³ (1.4152 W/set)	100 kHz, 200 mT, 100 °C

NOTE

Spec. modifications	Previous	Revised
2005-06-16	G=11.7 NOM. LOSSES: GENERAL R MATERIAL	G>9.0 LOSSES: DETAIL AS INDICATE