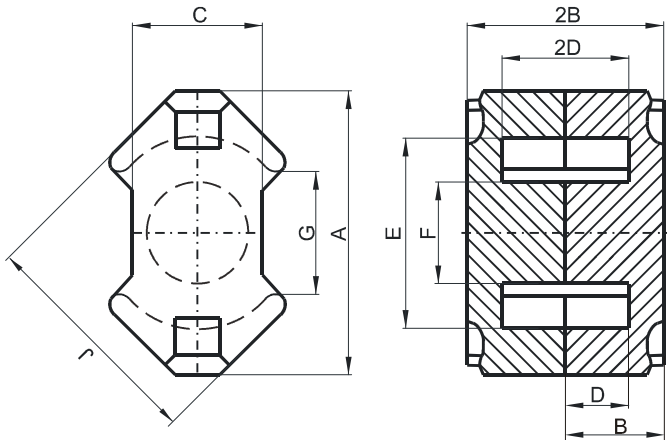


DIMENSIONS



(mm)	Nominal:	Tol. min.:	Tol. max.:
A	42.2	-1.4	0.0
B	15.05	-0.05	+ 0.05
2B	30.1	-0.1	+ 0.1
C	19.0	-0.6	0.0
D	10.4	0.0	+ 0.3
2D	20.8	0.0	+ 0.6
E	29.0	0.0	+ 1.2
F	15.0	-0.6	0.0
G	17.0 Nom.		
J	34.8	-1.3	0.0
Eff. Parameters			
Ae mm²	Amin mm²	le mm	Ve mm³
198.0	168.0	70.0	13900

INDUCTANCE

AL value (nH/T²)	Test conditions
Nom: 7000 Min.: 5250	10 kHz, < 0.5 mT, 25 °C

MARKING

R UG

CORE LOSSES

P_i max	Test conditions
101 mW/cm ³ (1.4 W/set)	100 kHz, 100 mT, 100 °C
532 mW/cm ³ (7.4 W/set)	100 kHz, 200 mT, 100 °C