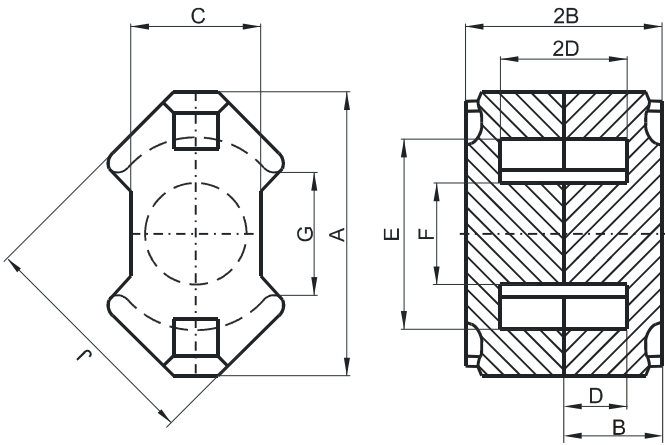


**DIMENSIONS**



(mm)	Nominal:	Tol. min.:	Tol. max.:
<b>A</b>	23.2	-0.9	0.0
<b>B</b>	8.2	-0.05	+ 0.05
<b>2B</b>	16.4	-0.1	+ 0.1
<b>C</b>	11.0	-0.5	0.0
<b>D</b>	5.5	-0.1	+ 0.1
<b>2D</b>	11.0	-0.2	+ 0.2
<b>E</b>	17.0	0.0	+ 0.6
<b>F</b>	8.55	-0.3	0.0
<b>G</b>	9.5 Min.		
<b>J</b>	19.7	-0.8	0.0
<b>Eff. Parameters</b>			
<b>Ae mm<sup>2</sup></b>	<b>Amin mm<sup>2</sup></b>	<b>le mm</b>	<b>Ve mm<sup>3</sup></b>
63.0	55.4	38.4	2440

**INDUCTANCE**

AL value (nH/T <sup>2</sup> )	Test conditions
4100 ± 25%	10 kHz, < 0.5 mT, 25 °C

**MARKING**

T UG
---------

**CORE LOSSES**

P <sub>i</sub> max	Test conditions
< 1.44 W/set (< 590 mW/cm <sup>3</sup> )	100 kHz, 200 mT, 25 °C
< 1.37 W/set (< 560 mW/cm <sup>3</sup> )	100 kHz, 200 mT, 100 °C

**NOTE**

Spec. modifications	Previous	Revised
2013-03-29		Issued