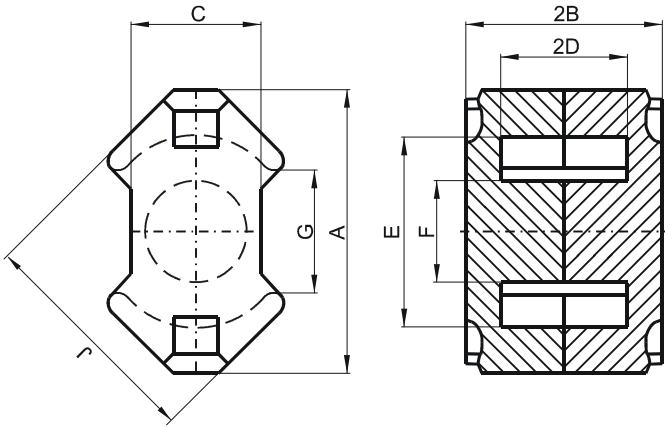


Specification for:

NW41510UG

110 Delta Drive
Pittsburgh, PA 15238
Phone: 412/696-1333
Fax: 412/696-0333
Email: magnetics@spang.com

DIMENSIONS



(mm)	Nominal:	Tol. min.:	Tol. max.:
A	14.6	-0.6	0.0
B	5.2	-0.05	+ 0.05
2B	10.4	-0.1	+ 0.1
C	6.8	-0.4	0.0
D	3.25	-0.1	+ 0.1
2D	6.5	-0.2	+ 0.2
E	10.2	0.0	+ 0.4
F	4.9	-0.2	0.0
G	6.0 Min.		
J	12.3	-0.5	0.0
Eff. Parameters			
Ae mm²	Amin mm²	le mm	Ve mm³
24.8	18.1	23.2	574

INDUCTANCE

AL value (nH)	Test conditions
Nom: 6000 Min.: 4200	10 kHz, < 0.5 mT, 25 °C

MARKING

No marking

LOSS FACTOR

$\tan \delta/\mu$ ($\times 10^{-6}$)	Test conditions
< 3	10 kHz, < 0.25 mT, 25 °C
< 45	100 kHz, < 0.25 mT, 25 °C

NOTE

Spec. modifications	Previous	Revised
2005-06-16	Loss factor: General W material Marking	Loss factor: Detail as indicated No marking