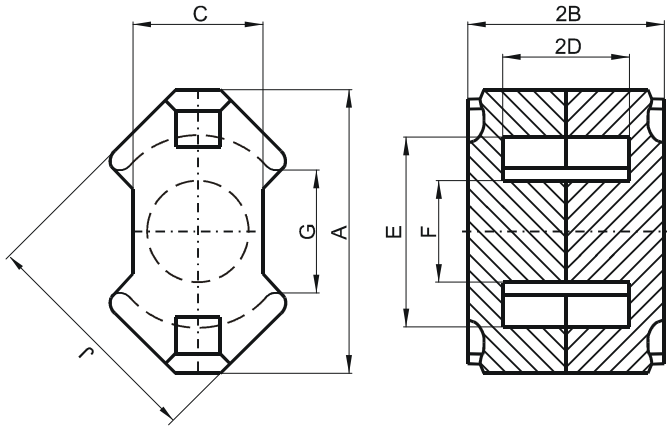


Specification for:

NW42819UG

110 Delta Drive
Pittsburgh, PA 15238
Phone: 412/696-1333
Fax: 412/696-0333
Email: magnetics@spang.com

DIMENSIONS



(mm)	Nominal:	Tol. min.:	Tol. max.:
A	28.5	-1.3	0.0
B	9.3	-0.05	+ 0.05
2B	18.6	-0.1	+ 0.1
C	13.5	-0.5	0.0
D	6.2	0.0	+ 0.3
2D	12.4	0.0	+ 0.6
E	21.2	0.0	+ 0.9
F	10.9	-0.4	0.0
G	10.9 Min.		
J	24.7	-1.1	0.0
Eff. Parameters			
Ae mm²	Amin mm²	le mm	Ve mm³
96.6	89.1	44.6	4310

INDUCTANCE

AL value (nH)	Test conditions
Nom: 16000 Min.: 11200	10 kHz, < 0.5 mT, 25 °C

MARKING

No marking

LOSS FACTOR

$\tan \delta/\mu$ ($\times 10^{-6}$)	Test conditions
< 3.5	10 kHz, < 0.25 mT, 25 °C
< 50	100 kHz, < 0.25 mT, 25 °C

NOTE

Spec. modifications	Previous	Revised
2005-06-22	C=13.46 Max. Loss factor: General W material	C=13.5 Max. Loss factor: Detail as indicated