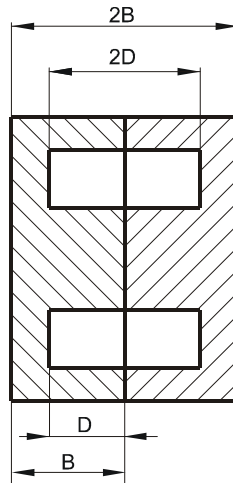
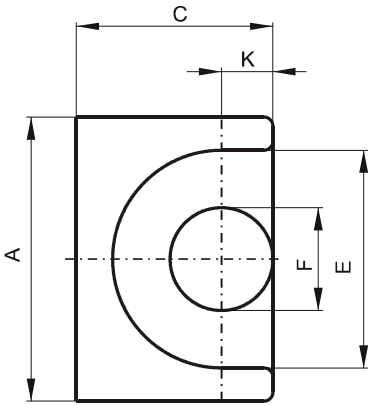


Specification for:

**PF41313UG**

110 Delta Drive  
Pittsburgh, PA 15238  
Phone: 412/696-1333  
Fax: 412/696-0333  
Email: magnetics@spang.com

**DIMENSIONS**



(mm)	Nominal:	Tol. min.:	Tol. max.:
<b>A</b>	12.8	-0.6	0.0
<b>B</b>	6.45	-0.08	+ 0.08
<b>2B</b>	12.9	-0.16	+ 0.16
<b>C</b>	9.0	-0.4	0.0
<b>D</b>	4.5	0.0	+ 0.2
<b>2D</b>	9.0	0.0	+ 0.4
<b>E</b>	9.7	0.0	+ 0.6
<b>F</b>	4.5	-0.3	0.0
<b>K</b>	2.4	-0.1	+ 0.1
<b>Eff. Parameters</b>			
<b>Ae mm<sup>2</sup></b>	<b>Amin mm<sup>2</sup></b>	<b>le mm</b>	<b>Ve mm<sup>3</sup></b>
19.5	14.9	24.2	472

**INDUCTANCE**

AL value (nH)	Test conditions
2000 ± 25%	10 kHz, < 0.5 mT, 25 °C

**MARKING**

F UG
---------

**CORE LOSSES**

P <sub>i</sub> max	Test conditions
212 mW/cm <sup>3</sup> (0.100 W/set)	25 kHz, 200 mT, 100 °C

**NOTE**

Spec. modifications	Previous	Revised
2005-06-22	A=12.22 Min. A=12.78 Max. B=6.50 Max. 2B=13.00 Max. E=9.73 Min. Losses: General F material	A=12.2 Min. A=12.8 Max. B=6.53 Max. 2B=13.06 Max. E=9.70 Min. Losses: Detail as indicated