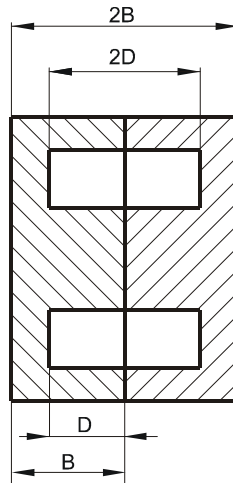
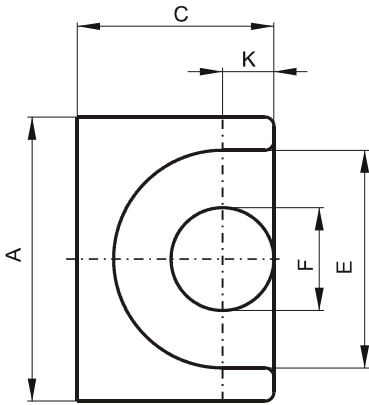


Specification for:

PP42120UG

110 Delta Drive
Pittsburgh, PA 15238
Phone: 412/696-1333
Fax: 412/696-0333
Email: magnetics@spang.com

DIMENSIONS



(mm)	Nominal:	Tol. min.:	Tol. max.:
A	24.0	-0.5	+ 0.5
B	10.7	-0.1	+ 0.1
2B	21.4	-0.2	+ 0.2
C	15.0	-0.35	+ 0.35
D	7.2	-0.15	+ 0.15
2D	14.4	-0.3	+ 0.3
E	16.5	-0.4	+ 0.4
F	8.8	-0.25	+ 0.25
K	4.5	-0.2	+ 0.2
Eff. Parameters			
Ae mm²	Amin mm²	le mm	Ve mm³
78.7	60.8	41.1	3230

INDUCTANCE

AL value (nH)	Test conditions
Nom: 4600 Min.: 3450	10 kHz, < 0.5 mT, 25 °C

MARKING

P UG

CORE LOSSES

P _i max	Test conditions
120 mW/cm ³ (0.4 W/set)	100 kHz, 100 mT, 100 °C

NOTE

Spec. modifications	Previous	Revised
2005-06-16	F=8.99 Max. Losses: General P material	F=8.8±0.25 Losses: Detail as indicated