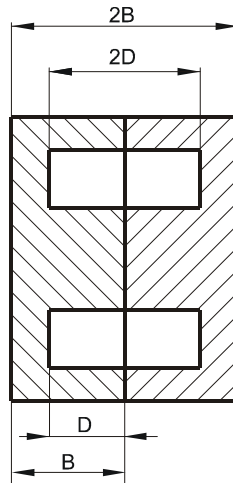
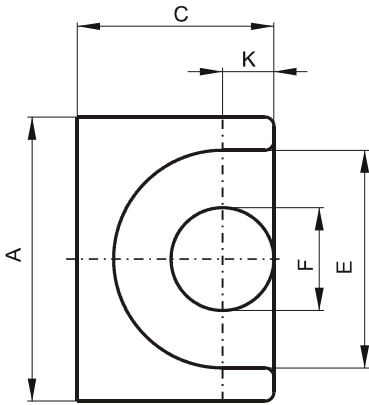


Specification for:

PW40707UG

110 Delta Drive
Pittsburgh, PA 15238
Phone: 412/696-1333
Fax: 412/696-0333
Email: magnetics@spang.com

DIMENSIONS



(mm)	Nominal:	Tol. min.:	Tol. max.:
A	9.2	-0.2	+ 0.2
B	3.7	-0.05	+ 0.05
2B	7.4	-0.1	+ 0.1
C	6.35	-0.15	+ 0.15
D	2.5 Min.		
2D	5.0 Min.		
E	7.2 Min.		
F	3.4 Max.		
K	1.7	-0.1	+ 0.1
Eff. Parameters			
Ae mm ²	Amin mm ²	le mm	Ve mm ³
10.7	8.55	15.5	165

INDUCTANCE

AL value (nH)	Test conditions
Nom: 5143 Min.: 3600	10 kHz, < 0.5 mT, 25 °C

MARKING

No marking

LOSS FACTOR

$\tan \delta/\mu$ ($\times 10^{-6}$)	Test conditions
< 3	10 kHz, < 0.25 mT, 25 °C
< 45	100 kHz, < 0.25 mT, 25 °C

NOTE

Spec. modifications	Previous	Revised
2005-06-22	Loss factor: General W material	Loss factor: Detail as indicated