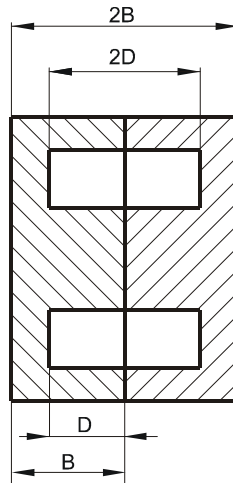
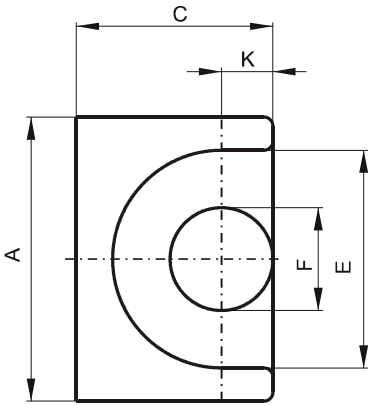


Specification for:

PW41717UG

110 Delta Drive
Pittsburgh, PA 15238
Phone: 412/696-1333
Fax: 412/696-0333
Email: magnetics@spang.com

DIMENSIONS



(mm)	Nominal:	Tol. min.:	Tol. max.:
A	18.0	-0.4	+ 0.4
B	8.4	-0.1	+ 0.1
2B	16.8	-0.2	+ 0.2
C	11.0	-0.25	+ 0.25
D	5.7	-0.15	+ 0.15
2D	11.4	-0.3	+ 0.3
E	12.0	-0.4	+ 0.4
F	5.7	-0.18	+ 0.18
K	3.3	-0.2	+ 0.2
Eff. Parameters			
Ae mm²	Amin mm²	le mm	Ve mm³
33.7	25.5	29.5	999

INDUCTANCE

AL value (nH)	Test conditions
Nom: 11429 Min.: 8000	10 kHz, < 0.5 mT, 25 °C

MARKING

No marking

LOSS FACTOR

$\tan \delta/\mu$ ($\times 10^{-6}$)	Test conditions
< 3.5	10 kHz, < 0.25 mT, 25 °C
< 50	100 kHz, < 0.25 mT, 25 °C

NOTE

Spec. modifications	Previous	Revised
2005-06-22	2D=11.18 Min. D=5.59 Min. F=5.84 Max. K=3.25±0.18 Loss factor: General W material	2D=11.1 Min. D=5.55 Min. F=5.88 Max. K=3.3±0.2 Loss factor: Detail as indicated