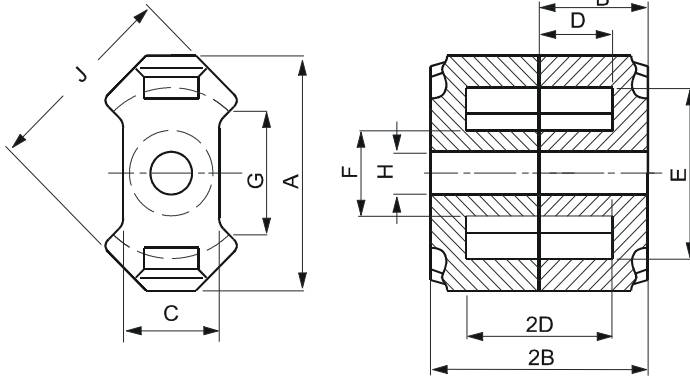


DIMENSIONS



(mm)	Nominal:	Tol. min.:	Tol. max.:
A	14.9 Max.		
B	5.2	-0.05	+ 0.05
2B	10.4	-0.1	+ 0.1
C	6.6 Nom.		
D	3.25	-0.1	+ 0.1
2D	6.5	-0.2	+ 0.2
E	10.4	-0.2	+ 0.2
F	4.8	-0.1	+ 0.1
G	6.71 Nom.		
H	2.05	-0.05	+ 0.05
J	12.05	-0.25	+ 0.25
Eff. Parameters			
Ae mm²	Amin mm²	le mm	Ve mm³
21.0	13.9	21.4	449

INDUCTANCE

MARKING

AL value (nH/T ²)	Test conditions	No marking
2100 ± 25%	10 kHz, < 0.5 mT, 25 °C	

CORE LOSSES

P _i max	Test conditions
223 mW/cm ³ (0.1 W/set)	25 kHz, 200 mT, 100 °C

NOTE

Spec. modifications	Previous	Revised
2005-06-22	Losses: General F material Marking	Losses: Detail as indicated No marking