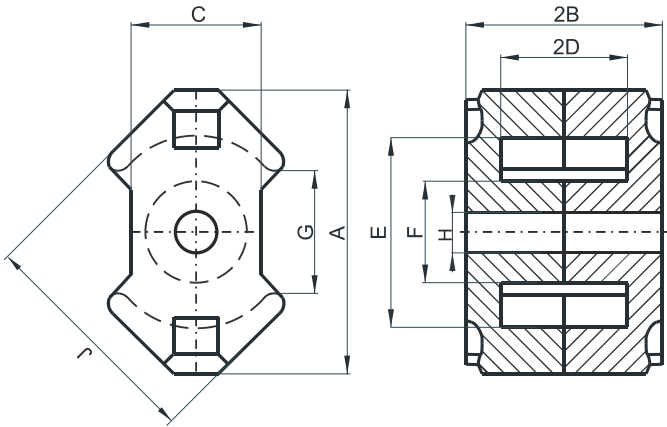


**DIMENSIONS**



(mm)	Nominal:	Tol. min.:	Tol. max.:
<b>A</b>	28.5	-1.3	0.0
<b>B</b>	9.3	-0.05	+ 0.05
<b>2B</b>	18.6	-0.1	+ 0.1
<b>C</b>	13.5	-0.5	0.0
<b>D</b>	6.2	0.0	+ 0.3
<b>2D</b>	12.4	0.0	+ 0.6
<b>E</b>	21.2	0.0	+ 0.9
<b>F</b>	10.9	-0.4	0.0
<b>G</b>	10.9 Min.		
<b>H</b>	5.4	0.0	+ 0.2
<b>J</b>	24.7	-1.1	0.0
Eff. Parameters			
<b>Ae mm<sup>2</sup></b>	<b>Amin mm<sup>2</sup></b>	<b>le mm</b>	<b>Ve mm<sup>3</sup></b>
83.2	65.3	41.7	3470

**INDUCTANCE**

AL value (nH/T <sup>2</sup> )	Test conditions
4750 ± 25%	10 kHz, < 0.5 mT, 25 °C

**MARKING**

No marking

**CORE LOSSES**

P <sub>i</sub> max	Test conditions
< 0.81 W/set (< 233 mW/cm <sup>3</sup> )	25 kHz, 200 mT, 100 °C

**NOTE**

Spec. modifications	Previous	Revised
2008-09-09	C = 13.46 Max. Losses: General F material	C = 13.5 Max. Losses: Detail as indicated