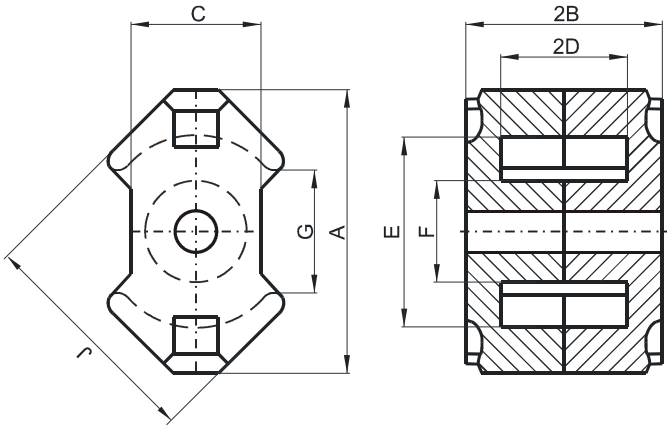


Specification for:

RJ42316UG

110 Delta Drive
Pittsburgh, PA 15238
Phone: 412/696-1333
Fax: 412/696-0333
Email: magnetics@spang.com

DIMENSIONS



(mm)	Nominal:	Tol. min.:	Tol. max.:
A	23.2 Max.		
B	8.2	-0.05	+ 0.05
2B	16.4	-0.1	+ 0.1
C	10.8 Nom.		
D	5.53	-0.13	+ 0.13
2D	11.05	-0.25	+ 0.25
E	17.35	-0.35	+ 0.35
F	8.4	-0.15	+ 0.15
G	11.7 Nom.		
H	4.5	-0.1	+ 0.1
J	19.3	-0.4	+ 0.4
Eff. Parameters			
Ae mm²	Amin mm²	le mm	Ve mm³
52.0	36.9	35.5	1850

INDUCTANCE

AL value (nH)	Test conditions
Nom: 6960 Min.: 5220	10 kHz, < 0.5 mT, 25 °C

MARKING

No marking

LOSS FACTOR

$\tan \delta l \mu$ ($\times 10^{-6}$)	Test conditions
< 20	100 kHz, < 0.25 mT, 25 °C

NOTE

Spec. modifications	Previous	Revised
2005-06-16	Loss factor: General J material Marking	Loss factor: Detail as indicated No marking