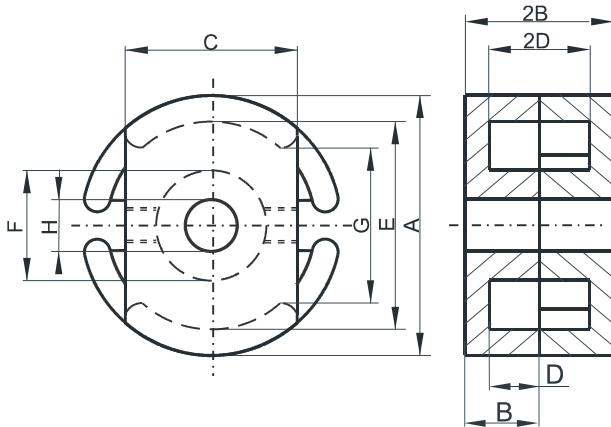


**DIMENSIONS**



(mm)	Nominal:	Tol. min.:	Tol. max.:
<b>A</b>	35.61	-0.51	+ 0.51
<b>B</b>	10.9	-0.075	+ 0.075
<b>2B</b>	21.8	-0.15	+ 0.15
<b>C</b>	23.85 Nom.		
<b>D</b>	7.4	-0.1	+ 0.1
<b>2D</b>	14.8	-0.2	+ 0.2
<b>E</b>	29.9 Min.		
<b>F</b>	16.1 Max.		
<b>G</b>	20.3 Min.		
Eff. Parameters			
<b>Ae mm<sup>2</sup></b>	<b>Amin mm<sup>2</sup></b>	<b>le mm</b>	<b>Ve mm<sup>3</sup></b>
179.5	140	55.4	9944

**INDUCTANCE**

**MARKING**

AL value (nH/T <sup>2</sup> )	Test conditions	P
Nom: 7580 Min.: 5685	10 kHz, < 0.5 mT, 25 °C	UG

**CORE LOSSES**

P <sub>i</sub> max	Test conditions
< 1.14 W/set (< 115 mW/cm <sup>3</sup> )	100 kHz, 100 mT, 100 °C

**NOTE**

Spec. modifications	Previous	Revised
2005-06-22	Losses: General P material	Losses: Detail as indicated