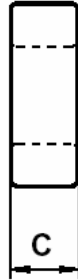
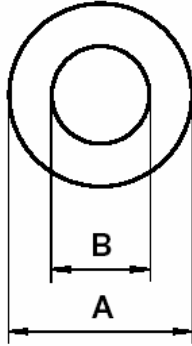


DIMENSIONS



(mm)	Uncoated Nominal:	Coated Min:	Coated Max:
O.D. (A)	12.7	12.85	13.55
I.D. (B)	7.35	6.3	7.0
Ht. (C)	6.35	6.4	7.1

Eff. Parameters		
A _e mm ²	l _e mm	V _e mm ³
16.5	29.9	496.7

INDUCTANCE

A _L value (nH/T ²)	Test conditions	
3612 ± 20%	10 kHz	0.5 mT (For N = 1, use 1.4 mA), 25°C
≥ 0.9 x A _L @ 10 kHz	200 kHz	

ELECTRICAL LOSSES

tan δ / μ _i	Test conditions
≤ 12 · 10 ⁻⁶	100 kHz, 0.5 mT, 25°C

COATING

Nylon 11 rated for 155°C continuous operation.
Voltage breakdown rating 1500 V min Wire-to-Wire.

NOTE

Spec. Modifications	Previous	Revised
2006.01.17	Nom ID = 7.14 OD max = 13.34 ID min = 6.50 Ht max = 6.91 LF: General J material A _L value up to 200 kHz Breakdown voltage > 1,000 V P/N prefix for coating = Z (nylon or epoxy)	Nom ID = 7.35 OD max = 13.55 ID min = 6.30 Ht max = 7.10 LF : Detail as indicated A _L at 200 kHz ≥ 0.9 x A _L at 10 kHz Breakdown voltage > 1,500 V P/N prefix for coating = V (nylon specified)